

# **St Peter's visit to China in April 2018**

## School List for St Peter's visit to China

### **Beijing**

1. Beijing Experimental Foreign Language School, senior division
2. Beijing Experimental Foreign Language School, pre-school division
3. Beanstalk International Bilingual School, Solana campus
4. Beanstalk International Bilingual School, Yangguang Shangdong campus
5. Beanstalk International Bilingual School, Shunyi campus

### **Shanghai**

6. Aiju Kindergarten
7. Shanghai HD Bilingual School

### **Suzhou**

8. Shattuck-St. Mary's School
9. Wujiang Cunzhi School

### **Zhengzhou**

10. Xiao Tian'e Kindergarten

11. Jincheng Tianlun (International) Kindergarten

## **Xi'an**

12. Rui Lang Kindergarten

13. Shaanxi Normal University Jin Yuan International School (Kindergarten)

14. Shaanxi Normal University Jin Yuan International School (primary school)

15. Shaanxi Normal University Jin Yuan International School (senior school)

16. Peking University Experimental Preschool—Xi'An Baihua Linjian Branch

17. Kid Castle Jin Yuan Kindergarten

18. Xi'an Northwestern Polytechnical University Jin Yuan Experimental Primary School

## Cultural Experience in China

1. The Great Wall, Beijing

2. Tian'anmen Square, Beijing

3. The Bund, Shanghai

4. The Humble Administrator's Garden, Suzhou

5. Xin Yangguang Holdings Co Ltd, Letu Winery, Zhengzhou

6. The Terracotta warriors, Xi'an, Shaanxi Province

On 2 April 2018, Chairman of the Board of St Peter's School, Mr. William Roger Woolley, Chairman of the Finance Committee of the Board of St Peter's School, Ms. Susan Lesley Palmer, OBE, Head of the Clifton School and Nursery of St Peter's School, Mr. Philip Charles Hardy, Secretariat for All Party Parliament Chinese in Britain Group, Legal adviser to the Overseas Chinese Affairs Office of the State Council and Vice-Chair of UCEC, Madam Christine Ching Kui Lee, Chef Operation Officer of CHRISTINE LEE & CO (SOLICITORS) LIMITED Ms Chun Hua Tang, and Vice President of Chinese Participation in the UK Politics, Mr Michael Edward Man-Ho Wilkes arrived at Beijing and embarked on their 10 days' school visit in China. Accompanied by the Head of the China Cooperation Council for St Peter's School, Mr Zhou and Executive Director of Washington Academy for Management of Technology, Mr Xu, the British delegation visited nurseries, kindergartens, primary schools, and senior schools in Beijing, Shanghai, Suzhou, Zhengzhou, Xi'an. Through this trip, the delegation is able to gain a holistic understanding on China's elementary education and educational policies, to experience China's class, and learn the development of international education in China, as well as experience China's social customs and folk culture. In the context of China-UK educational and cultural friendly exchanges, we have established a bridge of friendship of China-UK education exchange and cooperation.

#### 1、 Beijing - Beijing Experimental Foreign Language School, senior division

Beijing Experimental Foreign Language School was founded in 2000, providing students with degree education. The schools' college entrance examination results rank top among private schools in Beijing, and it is often ranked first in Chaoyang District, both in terms of its scores on high school entrance exams and on students' admission rate to high-quality universities in China and abroad. The school has obtained the honorary title of quality private school from the Beijing Municipal Education Commission and the Education Committee of Chaoyang District, Beijing.



Tour in the senior campus



Discussions with students from the campus





Exchanges and discussions with the school authority

2、 Beijing - Beijing Experimental Foreign Language School, pre-school division



Joining the children in the dancing class

### 3、 Beijing - Beanstalk International Bilingual School, Solana campus

Founded in 1993, Beanstalk Education Group has developed from operating only one kindergarten to having its own complete K-12 division. It has six kindergarten centers: five in Chaoyang District in Beijing and one on Hainan Island in southern China. Once children graduate from the kindergartens, they can then continue their study with BIBS or other public schools in China.



Tour in the outside area of BIBS Kindergarten

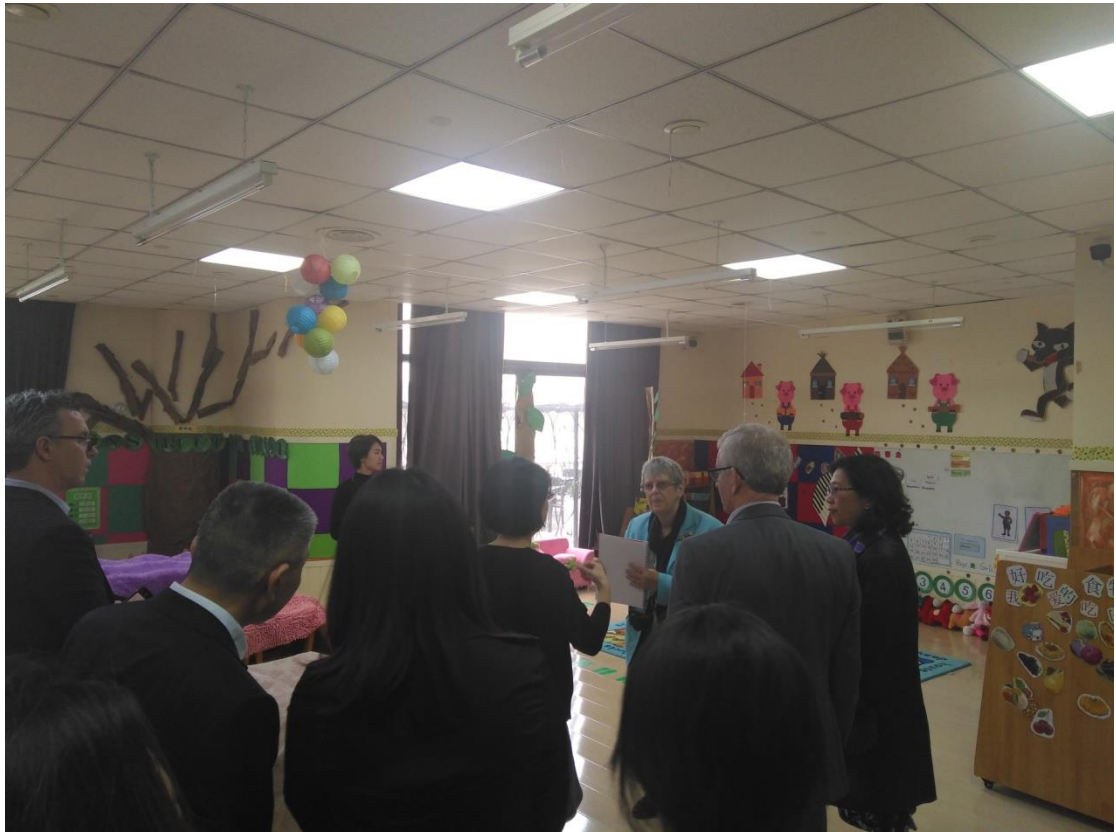




Profile of the BIBS Kindergarten faculty



Introduction to BIBS Kindergarten



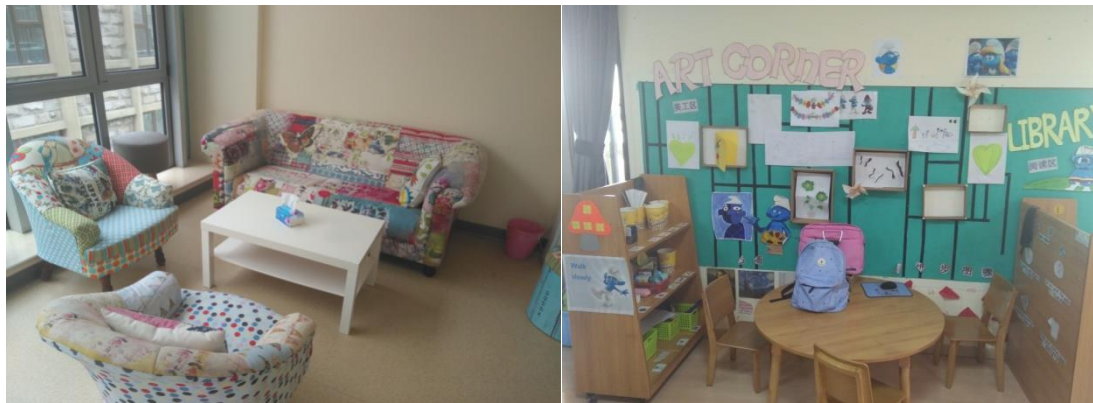
Activity classroom for children







Getting to know the class area of BIBS Kindergarten







Activity areas for children in BIBS



Training and group study for teachers in BIBS Kindergarten



#### 4、 Beijing - Beanstalk International Bilingual School, Upper East Side campus

As an important part of the BIBS Education Group, the BIBS International Bilingual School provides Chinese and foreign students with a consistent education from kindergarten to the 12th grade. BIBS is an IB World School authorized school to offer the IB Diploma Programme and is a candidate for the IB PYP and IB MYP programmes. BIBS is also accredited by the Western Association of Schools and Colleges (WASC), meaning that the BIBS High School Diploma is equivalent to graduating in the United States. Moreover, BIBS students can graduate Grade 12 with a bilingual IB Diploma!







Tour in the school library



Mr Hardy presenting the St Peter's pin to BIRS

5、 Beijing - Beanstalk International Bilingual School, Shunyi campus







Trying school meal  
17







Communication and exchanges between St Peter's and BIBS

## 6、 Shanghai - Aiju Kindergarten



Introduction about kindergartens in Shanghai in the classroom





Shanghai Aiju Kindergarten







Group photo of St Peter's delegation and the headteacher of Aiju Kindergarten Ms Ma

## 7、 Shanghai - Shanghai HD Bilingual School









## 8、 Suzhou - Shattuck-St. Mary's Suzhou School

Shattuck-St. Mary's Suzhou School is a branch school of the American top boarding school

Shattuck-St. Mary's School (SSM). The school is located at the junction of Shanghai and Suzhou, in Tongli Ancient Town, Wujiang District, Suzhou, a famous cultural town with a thousand years of history. It covers an area of nearly 16.5 acres and is the former site of Tongli Middle School. In 2016, the Shattuck-St. Mary's School and Shanghai Ideal Education Group jointly established the school.









## 9、 Suzhou - Wujiang Cunzhi School

Cunzhi School affiliated to Tongji University (Wujiang Foreign Studies Academy) is founded by Shanghai Ideal Education Group. The school started in 1 Sept 2016, mainly open to the seventh graders in 2016. The school covers an area of 17 acres, building area 30,000 square meters, fully equipped with teaching facilities, gymnasiums, art galleries, libraries, multifunctional classrooms and other facilities. It is a boarding school. There are 4 students in one dormitory room with solid wood beds, eco-friendly and warm. The cafeteria serves nutritious buffet for breakfast, lunch and dinner, as well as snacks such as milk and fruits, to guarantee a balanced nutrition for students.







Communications between St Peter's and Wujing Cunzhi School

#### 10、 Zhengzhou - Xiao Tian'e Kindergarten

Xiao Tian'e Education was founded in 2004, focusing on early childhood education. It has four kindergartens, an extension training base and a logistics department, with more than 1,200 teachers and students. Xiao Tian'e Kindergarten is an outstanding provincial model kindergarten and an advanced private education institution in Henan Province.







Mr Hardy experiencing Kong Fu lesson from a Xiao Tian'e Teacher



Classrooms of Xiao Tian' e



Outdoor areas of Xiao Tian' e

## 11、 Zhengzhou - Jincheng Tianlun (International) Kindergarten









Visiting children's art room



Performance from teachers team of Jincheng Tianlun Kindergarten



In-depth communication between St Peter's and head teacher of Jincheng Tianlun

## 12、 Xi'an - Rui Lang Kindergarten

Xi'an Ruilang Kindergarten is a flagship kindergarten founded by Shaanxi Ruilang Education Group with an investment of 20 million yuan in 2016. The total area is over 4,000 square meters, the usable floor area is nearly 7,000 square meters, and the outdoor space is 2500 square meters. The kindergarten has 13 standard classrooms. It can receive more than 400 children aged 2.5-6. It is a full-time kindergarten.



Visiting children's manual area





Sharing class with children





Participating in class activity



Group photo of the delegation and headteacher of Rui Lang Kindergarten

13、 Shaanxi Normal University Jin Yuan International School (Kindergarten)

Shaanxi Normal University Jin Yuan International School is a high quality international garden-like school with kindergarten, primary school and middle school. It is managed by Shaanxi Normal University. The school has a total investment of 100 million yuan and a building area of more than 30,000 square meters.







Sharing class fun with the children



Mr Hardy presenting St Peter's introduction

**14、 Shaanxi Normal University Jin Yuan International School (primary school)**

There is a comprehensive building with 24 classrooms in primary school. There are also a lecture hall, a gym room, a studio, a labor skill classroom, an art classroom, a music classroom, an audio-visual classroom, a language lab, a calligraphy classroom, a computer room, and two nature laboratories and a reading rooms.





Students from the primary school presenting their handmade paper cuttings to the delegation







Experiencing PE class

### **15、 Shaanxi Normal University Jin Yuan International School (senior school)**

The school has a comprehensive teaching building with 36 classrooms. The building has five floors above the ground and a basement floor (bicycle park). There are also a lecture hall, a gymnastics room, a studio, a labor skill classroom, a history and geography classroom, an art classroom, a science and technology activity room, a library, a staff reading room and a students reading room, a music classroom, a language lab, and a computer classroom. There are also 3 piano rooms and 10 labs.









Students from the senior school performing traditional Chinese dance

#### 16、 Peking University Experimental Preschool—Xi’An Baihua Linjian Branch

The preschool is a public kindergarten affiliated to Peking University. The Graduate School of Education of PKU College directly provides a powerful preschool education resource and specialized, standardized, and internationalized supervision and training. The kindergarten is located in the birch forest community. The kindergarten covers an area of 5,100 square meters and the building area is 3,861 square meters. There are 9 standard classrooms in the kindergarten, able to accommodate 270 children aged 3 to 6.



Ms Palmer having fun with the children in class







### 17、 Kid Castle Jin Yuan Kindergarten

Kid Castle Jin Yuan Kindergarten was officially opened in June 2004. It is committed to provide



high-quality education for 2-6-year-olds. Kid Castle has experienced more than 20 years of educational research and educational practice, and has developed teaching materials on core subjects such as Chinese, English, mathematics and science.



## 18、 Xi'an Northwestern Polytechnical University Jin Yuan Experimental Primary School

Xi'an Northwestern Polytechnical University Jin Yuan Experimental Primary School began enrolling students in 2002. The school aims at "providing everything for students' every aspects". From the beginning, the school insists on high-level education and high standards, emphasizing on moral education, encouraging students to develop in an all-round way. The school has 30 teaching classes, more than 10 specialized classrooms. The school is equipped with advanced teaching facilities including a campus network and internet availability. Every classroom is equipped with multimedia audio-visual facilities. There are more than 1,400 students and more than 80 faculty members in the school.



Trying Chinese engraving









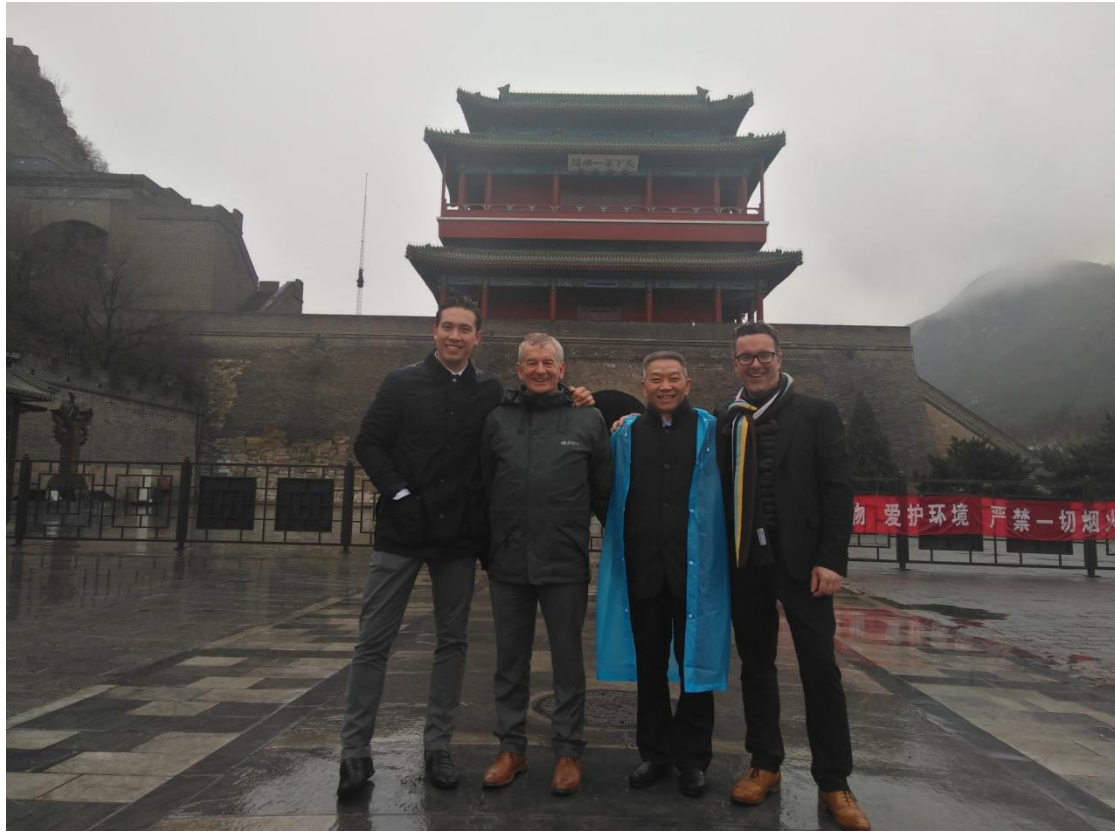
Group photo with the school teachers

## Cultural experience in China

### 1. The Great Wall, Beijing







## 2. Tian'anmen Square, Beijing







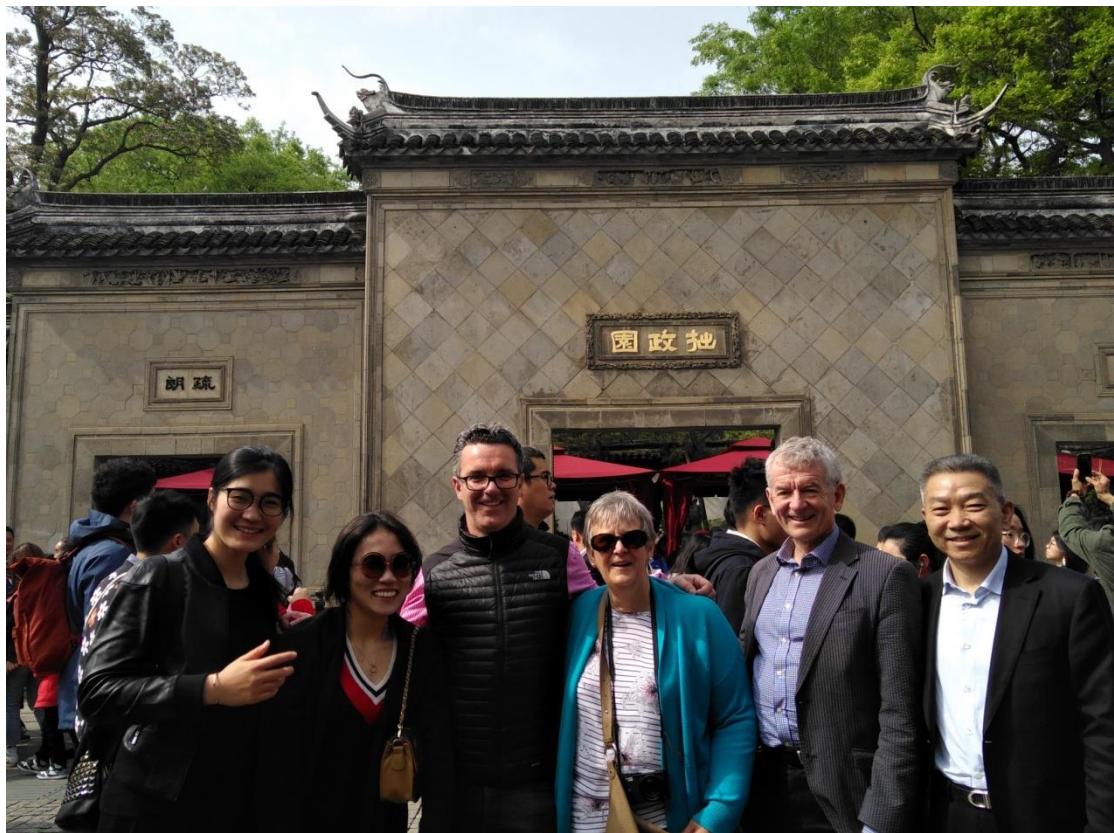
### 3. The Bond, Shanghai







#### 4. The Humble Administrator's Garden, Suzhou









## 5. Experience High-speed train



High-speed train from Suzhou to Zhengzhou





Discussion and exchanges between China and UK education policies, with the vice provincial governor of Henan Mr Zhang, Director of the Education Department of Henan Province Mr Diao, deputy director of Zhengzhou Education Commission Mr Zhang, Deputy Mayor of Zhengzhou Ms Liu

## **6. Drum Tower of Xi'an**







## 7. The Terracotta Warriors, Xi'an







On April 10, 2018, the British delegation of St Peter's School finished their visit to China. This was a

9-day trip to eighteen schools (kindergartens, primary schools, and middle schools) in Beijing, Shanghai, Suzhou, Zhengzhou and Xi'an. Mr. William Roger Woolley, chairman of the Board of St Peter's School, and his companions were able to access classes, communicate with the teachers and listen attentively to the comprehensive interpretation of education policies by Chinese government officials, and thoroughly understand the official education policies in modern China and the development of elementary education, international education in China. At the same time, Mr. Philip Charles Hardy, head of the Clifton School and Nursery of St Peter's School, also shared the long history, core values and pure British education concept of St Peter's School with the schools they visited, leaving a deep impression on China-UK educational and cultural exchanges. After this nine-day visit to China, St Peter's School and the Chinese schools they visited have built up a strong desire for cooperation. With full confidence, they are willing to work together to achieve the goal of "providing real international education for parents and students in China".